

Tire Gardens

The tire gardens are portable gardens that can literally go almost anywhere even on a roof. If lacking suitable ground for vegetable farming such as problems with goats and other animals, distance from water source, poor soil, tree roots, rocky soil. A garden can be established in a tire and it is portable. The tire garden can be placed out of the reach of animals, under the shade of a tree, close to a water source.

The garden is made from an old tire and a small sheet of plastic film (e.g. a garbage bag).

Construction is simple. Lay a tire flat on the ground. Note that the top rim is a mirror image of the bottom rim. With a knife or machete, cut off the top rim.



Photos By: C Young



Place a piece of plastic inside the tire on the bottom rim, large enough so that an inch or two of plastic stands up along the walls of the tire.



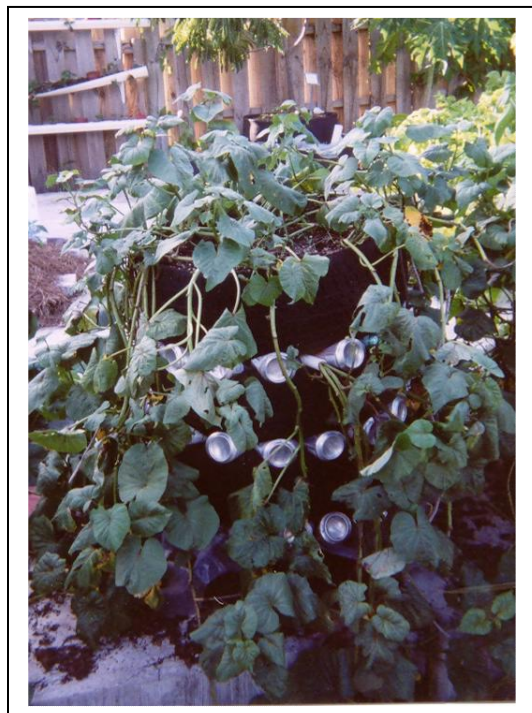
Now turn the top rim that has been cut off upside down. It fits like a lock on the bottom rim, holding the plastic firmly in place.

Fill with growing medium, usually starting with lightweight, airy materials on the bottom and soil or compost on the surface. If the plastic is trimmed to near the bottom of the tire, the garden will essentially be a portable "shallow bed garden." If the plastic is left so that a pool of water is formed, it will be more like the "shallow pool garden."





Tires can be placed on wooden racks to take up less space. Plants that need shade can be placed on the bottom



Sweet Potatoes
3 tires are stacked on top of each. The bottom tire is filled with soil and seed potatoes are planted. As the plants come to the surface more soil is added until all the tires are filled. The empty soda cans are placed between the tires to allow more air to get to the roots.

For More Information

ECHO, INC

<http://www.echonet.org/>

17391 Durrance Road

North Fort Myers, Florida 33917 USA

Phone: 239-543-3246